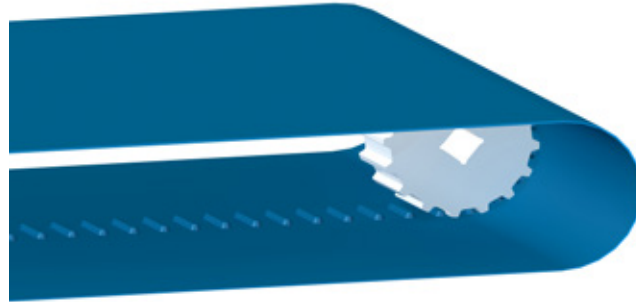
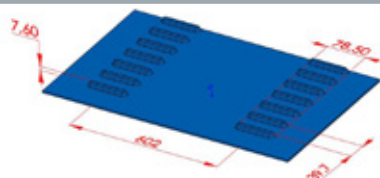


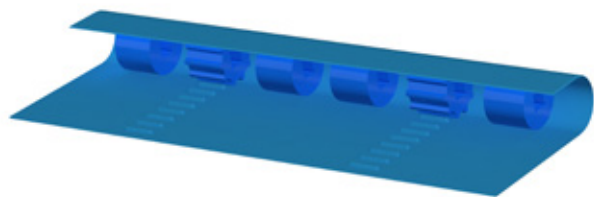


«THE STANDARD OF POSITIVE BELT»

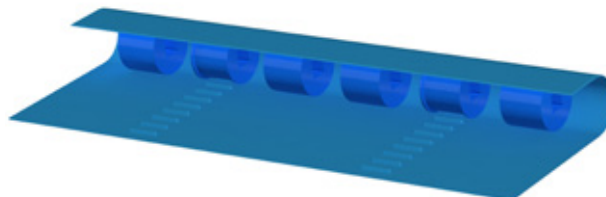


	S/DRIVE	S/DRIVE EMBOSSED	S/DRIVE ANTIMICROBIAL	S/DRIVE THICKNESS 5
Reference	SDB40B3	SDB40B3EM	SDB40B3AM	SDB40B5
Material	Polyurethane	Polyurethane	Polyurethane	Polyurethane
Colour	Blue	Blue	Blue AM	Blue
Food approval	CE / FDA	CE / FDA	CE	CE / FDA
Top surface texture	Smooth	Embossed	Smooth	Smooth
Hardness	95 ShA	95 ShA	95 ShA	95 ShA
Pitch (mm) ± 0,3 (mm)	39,7	39,7	39,7	39,7
Thickness (mm)	3	3	3	5
Total thickness (mm)	10,6	10,6	10,6	12,6
Tooth row distance (mm)	612	612	612	612
Max width (mm)	1 650	1 650	1 650	1 650
Weight	3,6 kg/m ²	3,6 kg/m ²	3,6 kg/m ²	6,7 kg/m ²
Minimum pulley diameter (mm)	100	100	100	230
Minimum back flex diameter (mm)	100	100	100	230
Operating temperatures	-20°C to +60°C	-20°C to +60°C	--20°C to +60°C	-20°C to +60°C
Traction force 2.5% lengthening per 100 mm width	65 daN	65 daN	65 daN	110 daN
Friction coefficient				
On HDPE bed	0,2	0,2	0,2	0,2
On stainless steel bed	0,52	0,52	0,52	0,52



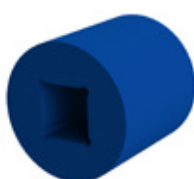
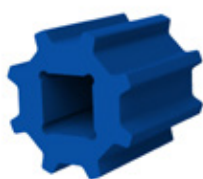


Motorisation



Reverse

SPROCKETS, WHEELS AND PULLEYS FOR BELTS SDB40B3



REFERENCE	PRODUCT	MATERIAL	COLOUR	OUTER DIAMETER (mm)	INSIDE DIAMETER (mm)	NUMBER OF TEETH	SQUARE BORE (mm)	WIDTH (mm)
P40BUN08C40	Sprocket	HDPE	Blue	101,4	-	8	40	100
R40BUN08C40	Wheel				-	-		
D40BUN08C40	Pulley				85,4	-		
P40BUN10C40	Sprocket	HDPE	Blue	127,5	-	10	40	100
R40BUN10C40	Wheel				-	-		
D40BUN10C40	Pulley				111,5	-		
P40BUN12C40	Sprocket	HDPE	Blue	152,8	-	12	40	100
R40BUN12C40	Wheel				-	-		
D40BUN12C40	Pulley				136,8	-		
P40BUN14C40	Sprocket	HDPE	Blue	178,8	-	14	40	100
R40BUN14C40	Wheel				-	-		
D40BUN14C40	Pulley				162,8	-		
P40BUN16C40	Sprocket	HDPE	Blue	204,8	-	16	40	100
R40BUN16C40	Wheel				-	-		
D40BUN16C40	Pulley				188,8	-		
P40BUN18C40	Sprocket	HDPE	Blue	230,7	-	18	40	100
R40BUN18C40	Wheel				-	-		
D40BUN18C40	Pulley				214,7	-		
P40BUN20C40	Sprocket	HDPE	Blue	256,7	-	20	40	100
R40BUN20C40	Wheel				-	-		
D40BUN20C40	Pulley				240,7	-		

Sprockets, wheels and pulleys with 1.5" square bore on request